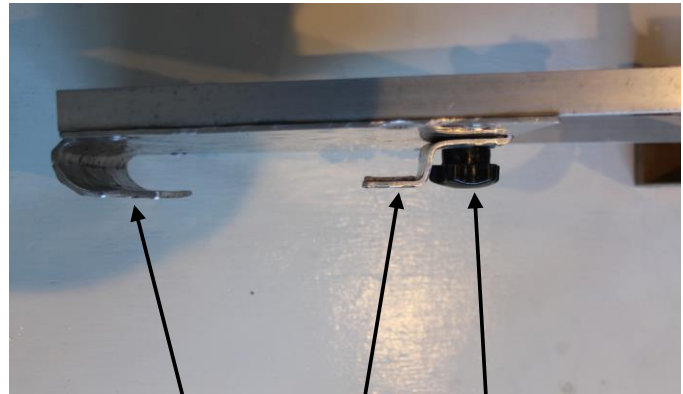
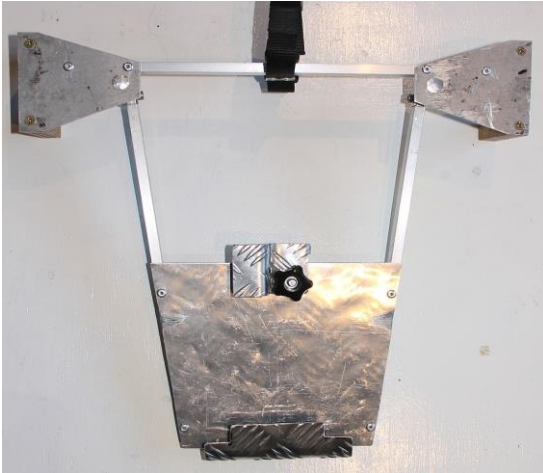


WHEELCHAIR TO PUSHCHAIR LINK HOW TO USE

Attach the link to the wheelchair footplate:

- Loosen the black knob and rotate the clamp away from the footplate
- Hook the Link footplate over the rear edge of the chair footplate
- Rotate the clamp into position and tighten the black knob, holding the clamp in place

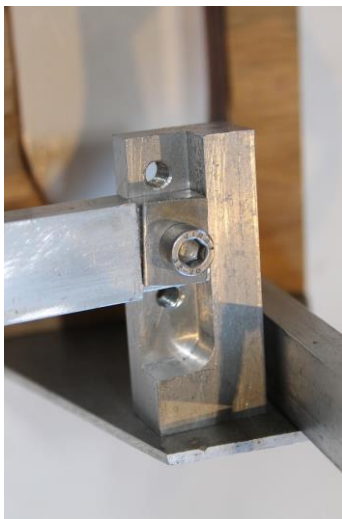


Link Footplate hook. Clamp Knob

View of underside of Link, showing
Clamp in open position

Place the pushchair on the Link:

- Slide the pushchair on with the rear wheels each side of the Link, into the U-shaped brackets. The wheels will now be released – remove them and store in the pushchair
- Fasten the safety strap around the pushchair bottom bar, with it's plastic clip



Safety strap
U brackets

To adjust the clearance
under the pushchair
wheels up or down $\frac{1}{2}$ an
inch, remove the hex-
head screws each side
and re-fix in the
appropriate holes.



Safety notes:

For use on level floors inside or outside on level paths pavements and safe road crossings only.

Do not use if:

- Path or road is uneven or slippery.
- Link is not fitted correctly.
- There is damage to the link or the pushchair.
- There are missing parts on link or pushchair.
- There are abnormal loads on the pushchair.